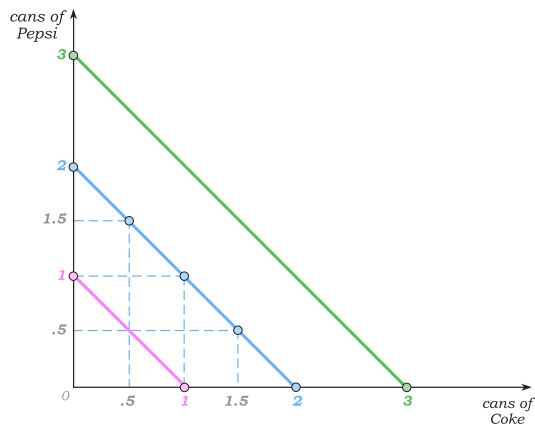
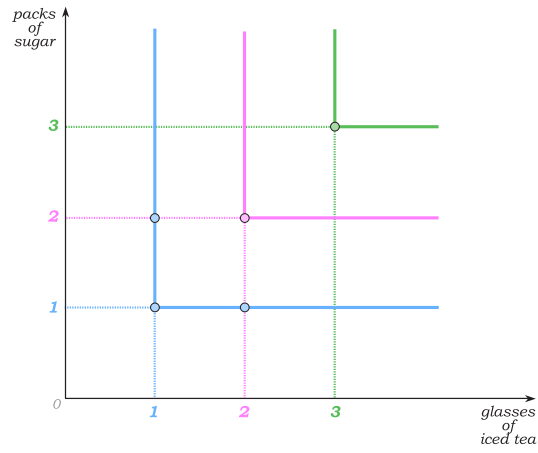


Chapter 5

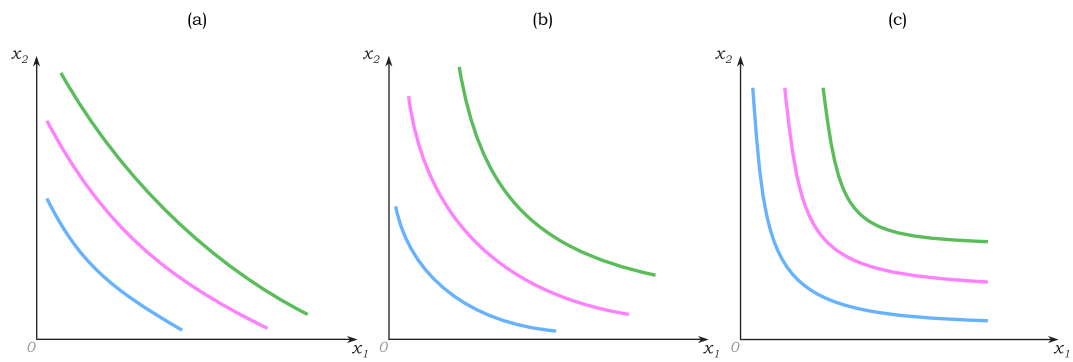
Graphs



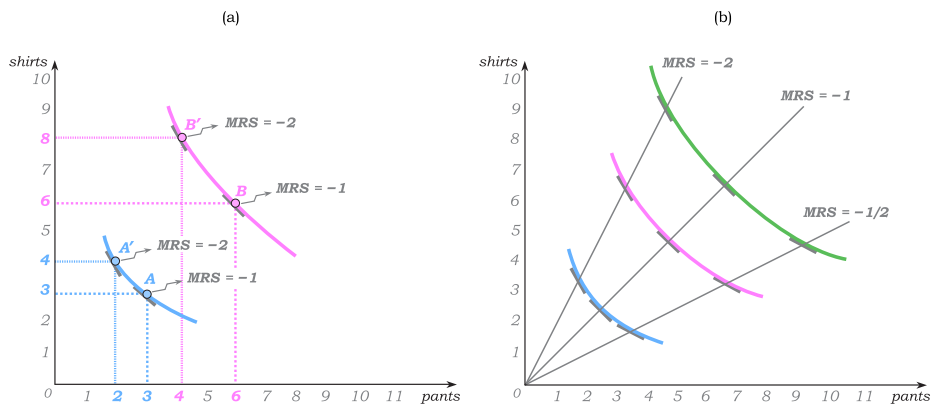
Graph 5.1: Indifference Curves for Perfect Substitutes



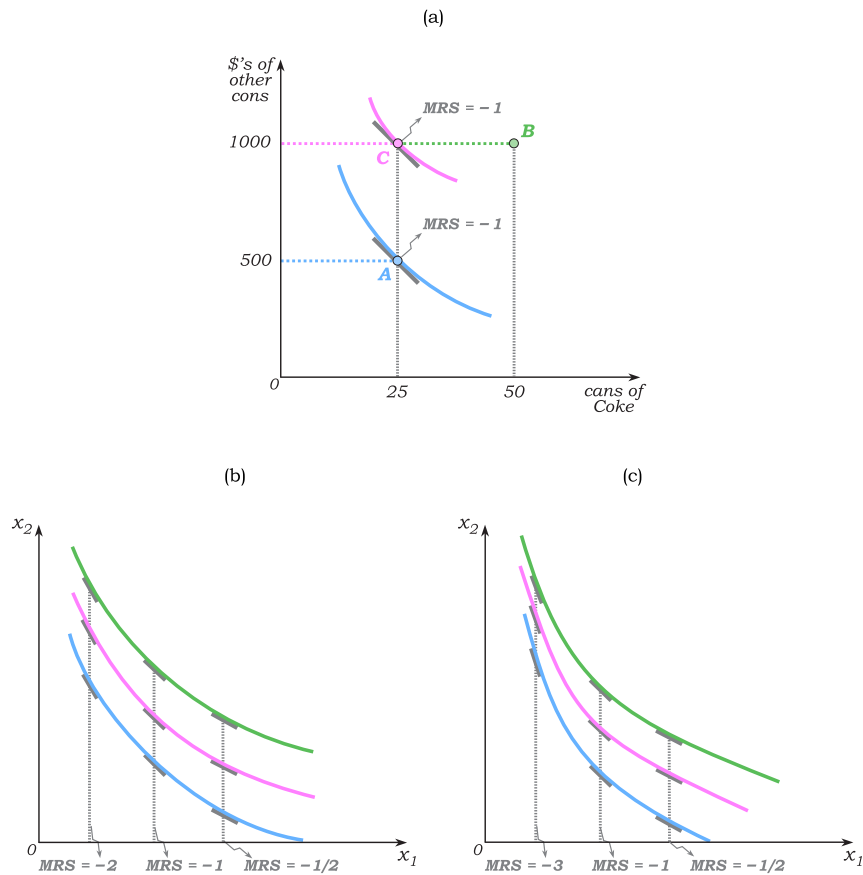
Graph 5.2: Indifference Curves for Perfect Complements



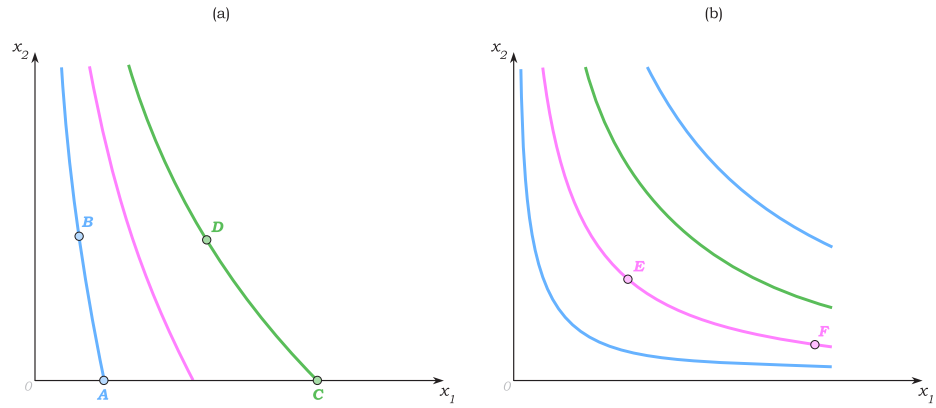
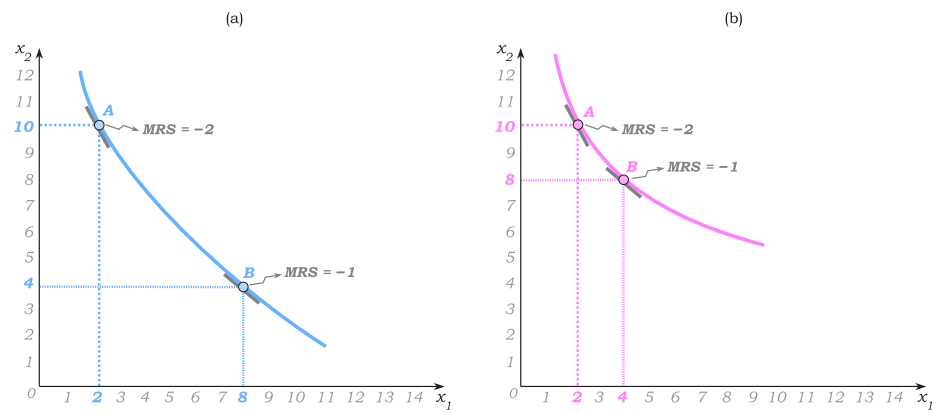
Graph 5.3: Indifference Curves for Less Extreme Cases of Substitutability and Complementarity



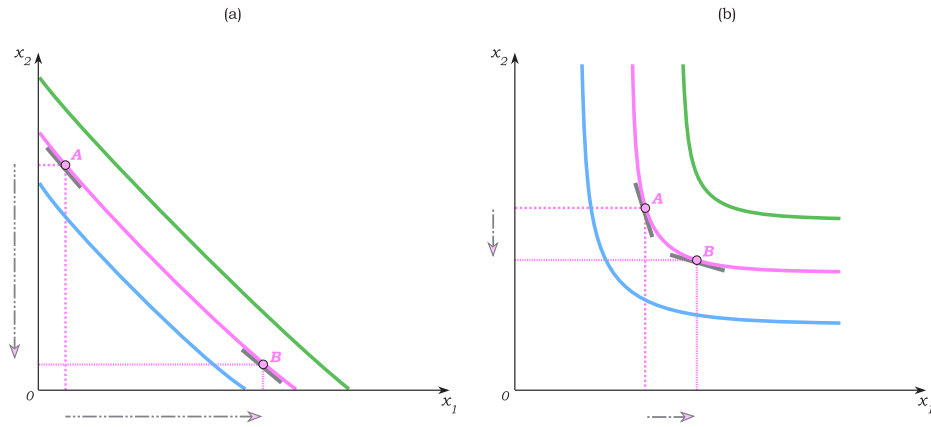
Graph 5.4: Homothetic Tastes, Marginal Rates of Substitution & Indifference Curves



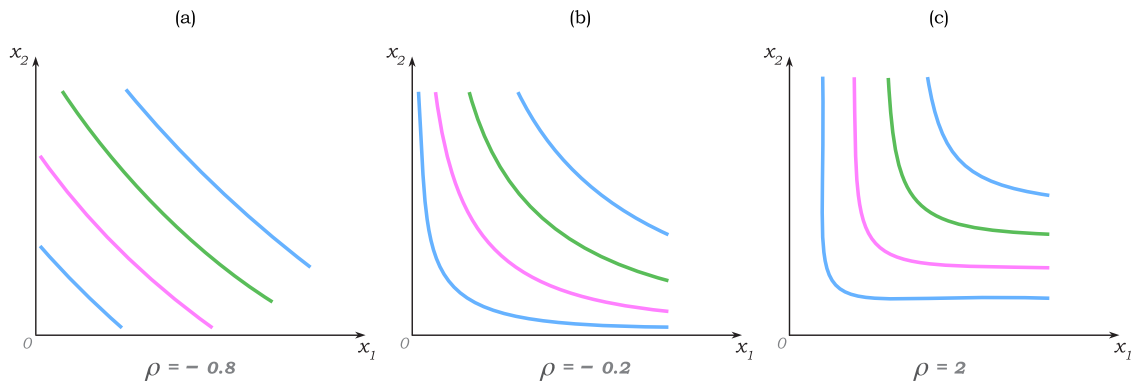
Graph 5.5: Quasilinear Tastes, Marginal Rates of Substitution & Indifference Curves

Graph 5.6: x_2 is “Essential” in (b) but not in (a)

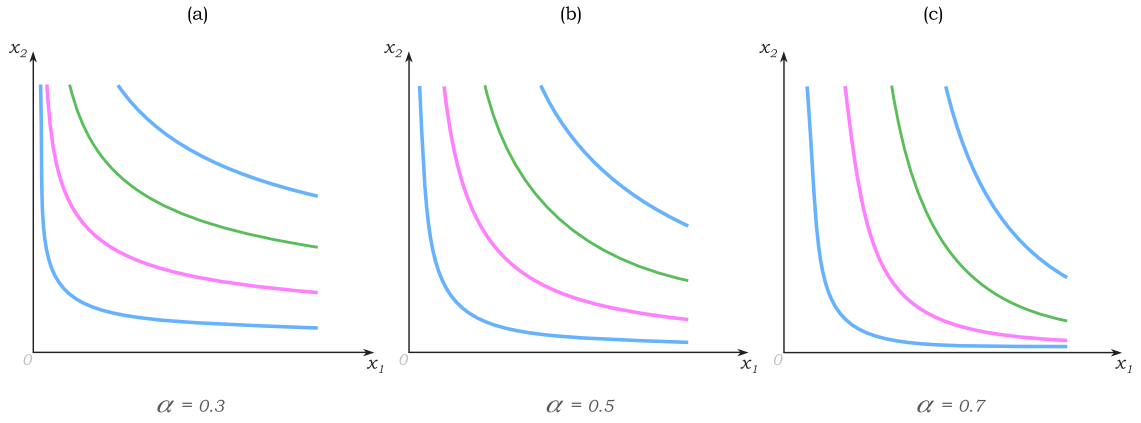
Graph 5.7: Degrees of Substitutability and Marginal Rates of Substitution



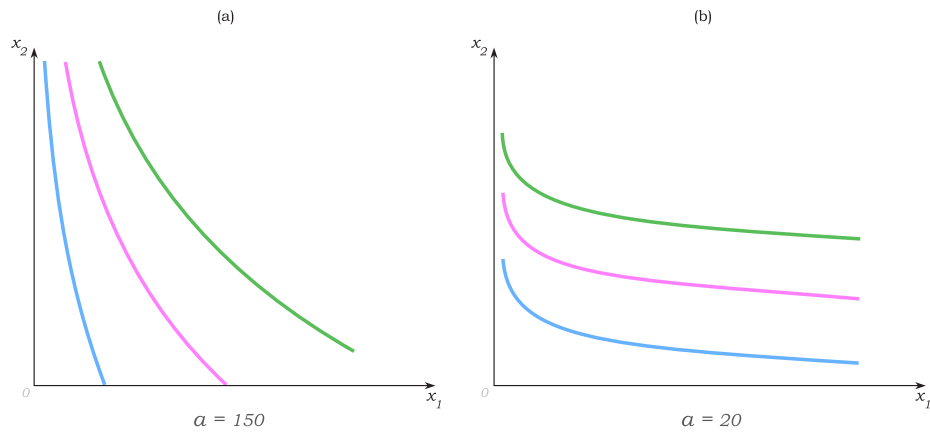
Graph 5.8: Degrees of Substitutability and the "Elasticities of Substitution"



Graph 5.9: Different Cobb Douglas Utility Functions



Graph 5.10: Different CES Utility Functions when $\alpha = 0.5$ and ρ varies



Graph 5.11: The Quasilinear Utility Functions $u(x_1, x_2) = \alpha \ln x_1 + x_2$